

## Hutan Desa -

- Community Rights for Kampar Peninsula Peatland Management

村落林(Hutan Desa)  
カンパール半島における泥炭管理のための住民の権利

Zainuri Hasyim  
Mitra Insani Foundation - Riau, INDONESIA  
October 2011

ザイヌリ・ハシム  
ミトラ・インサニ財団

## Riau Landscape

リアウ州のランドスケープ

- Riau mainland: ± 9 million hectar (2007)
  - Forest area: 434,233 hectar 森林地域
  - Around forest area: 3,246,553 hectar 森林周辺地域
  - Non-Forest area: 5,564,356 hectar 非森林地
  - Peatland distribution: ± 3.999,557 hektar 泥炭地域
- Natural forest (2007): ± 2,168,600 hectar 天然林
  - Peatland: ± 1,402,934 hectar 泥炭地
  - Non-Peatland: ± 765,666 hectar 非泥炭地



## Riau Landscape

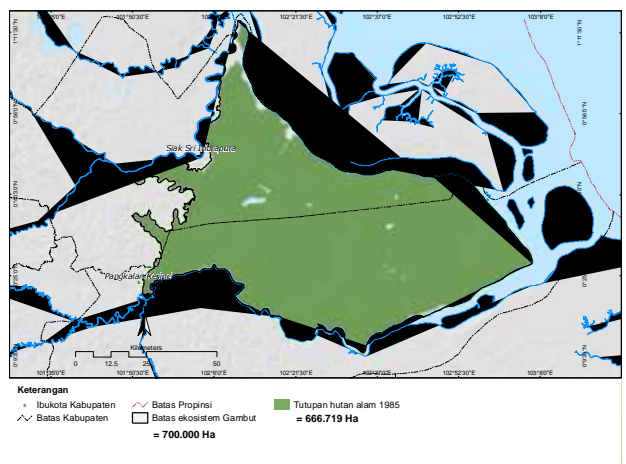
リアウ州のランドスケープ

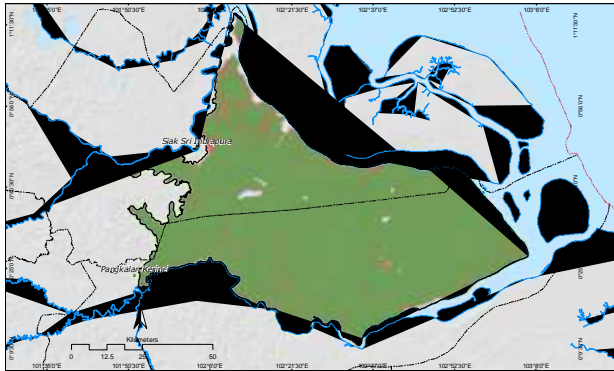
Data 2007 2007年のデータ

- Logging concession: ± 318,498 hectar 伐採権
- Timber plantation/HTI: 1,488,086 hectar 植林地
- Palm oil plantation: ± 2,146,750 hectar アブラヤシ農園
- Allocation for Ecosystem Restoration: ± 71,670 hectar (2010) エコシステム・レストレーションへの割当

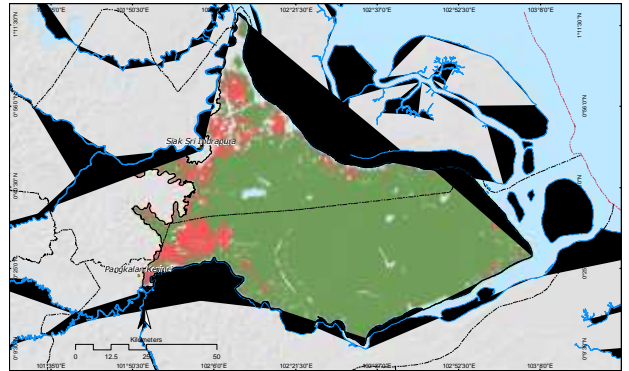
## Kampar Peninsula

カンパール半島

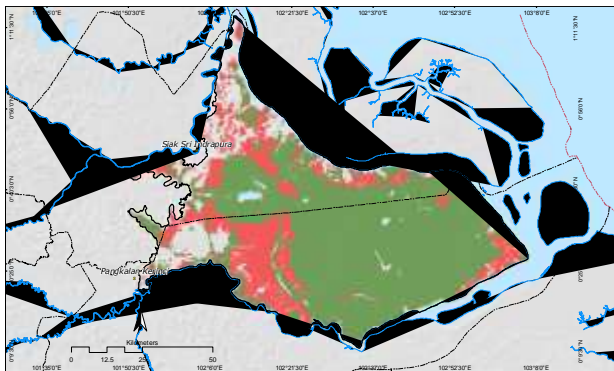




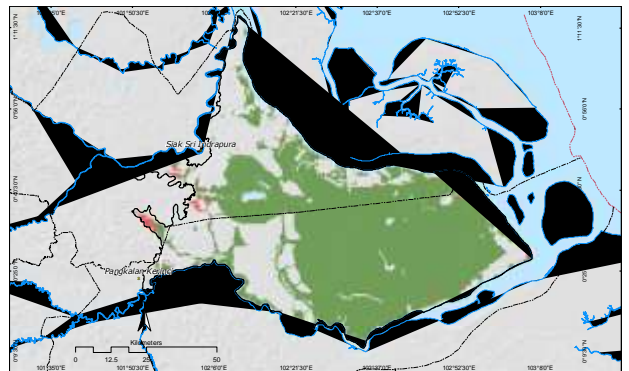
**Keterangan**  
 \* Ibukota Kabupaten    /-/-/ Batas Propinsi    ■ Tutupan hutan alam 1990 = 648.995 Ha  
 /-/-/ Batas Kabupaten    □ Batas ekosistem Gambut = 700.000 Ha    ■ Tutupan hutan hilang 1985-1990 = 17.723 Ha



**Keterangan**  
 \* Ibukota Kabupaten    /-/-/ Batas Propinsi    ■ Tutupan hutan alam 2000 = 595.962 Ha  
 /-/-/ Batas Kabupaten    □ Batas ekosistem Gambut = 700.000 Ha    ■ Tutupan hutan hilang 1990-2000 = 53.034 Ha  
 □ Tutupan awan



**Keterangan**  
 \* Ibukota Kabupaten    /-/-/ Batas Propinsi    ■ Tutupan hutan alam 2007 = 436.354 Ha  
 /-/-/ Batas Kabupaten    □ Batas ekosistem Gambut = 700.000 Ha    ■ Tutupan hutan hilang 2000-2007 = 159.608 Ha  
 □ Tutupan awan

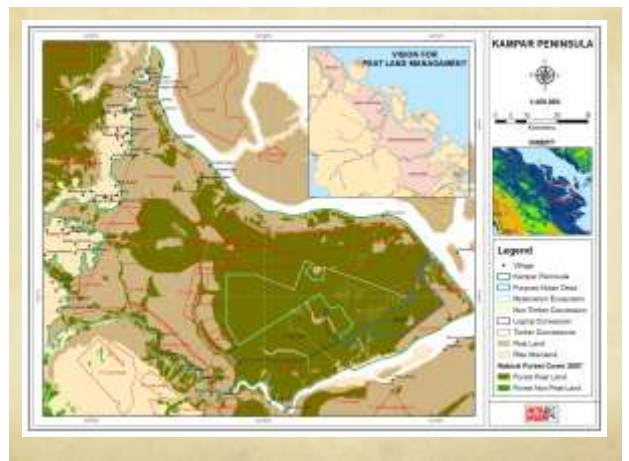


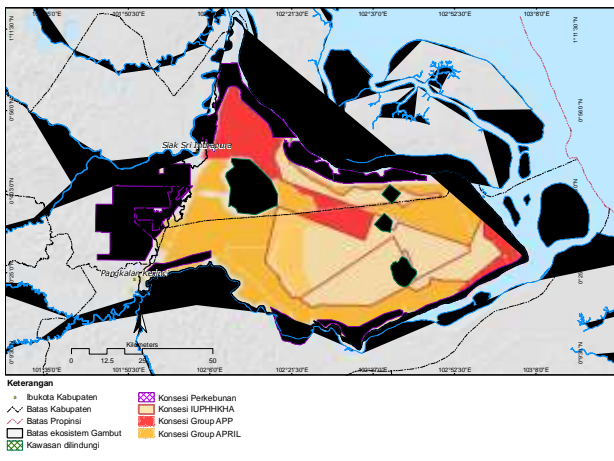
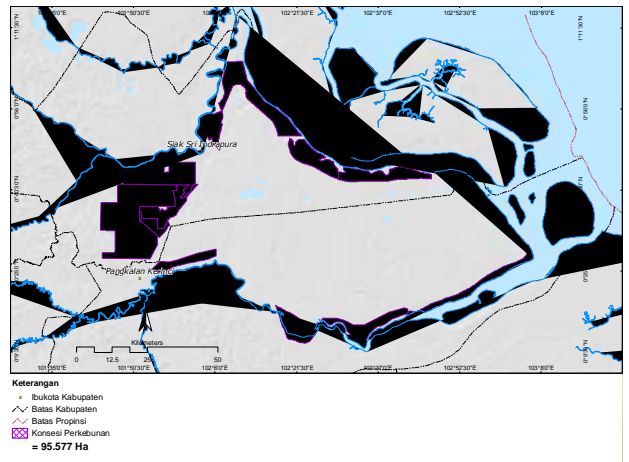
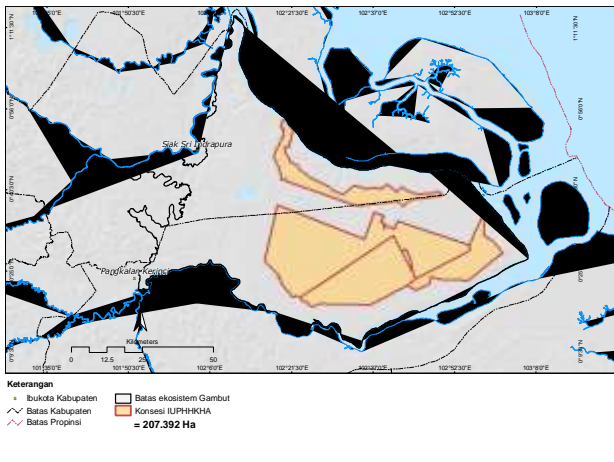
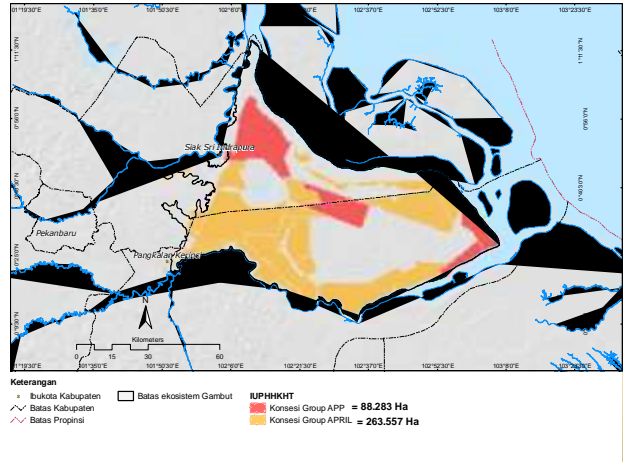
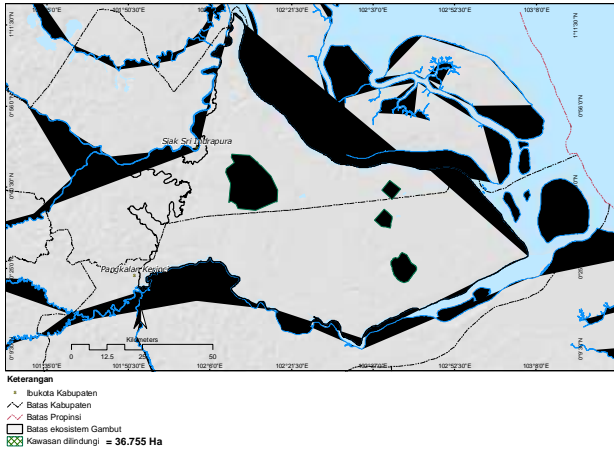
**Keterangan**  
 \* Ibukota Kabupaten    /-/-/ Batas Propinsi    ■ Tutupan hutan alam 2008 = 413.987 Ha  
 /-/-/ Batas Kabupaten    □ Batas ekosistem Gambut = 700.000 Ha    ■ Tutupan hutan hilang 2007-2008 = 22.366 Ha  
 □ Tutupan awan

## Kampar Peninsula カンパール半島

Data 2007 2007年のデータ

- Conservation area = 36,755 hectar  
保護区
- Timber plantation/HTI = 351, 840 hectar  
植林地
- Logging concession/HPH = 207,392 hectar  
伐採権
- Palm oil plantation = 95,577 hectar  
アブラヤシ農園





## Riau Forest & Community

リアウの森林と地域住民

- 71 villages are inside of forest area with 87,175 people  
87,175人の住む71の村が森林内に
- 361 villages are around of forest area with 919,957 people  
919,957人の住む361の村が森林の周りに
- Forest management is dominated by companies: timber concession (HTI), logging concession (HPH), dan palm-oil plantation  
森林管理は企業によって支配されている: HTI, HPH, アブラヤシ農園
- Poverty is the reality for villages around company's concession  
貧困は企業のコンセッションの周りに存在する
- Community consciousness for forest management  
住民たちは森林管理に意識がある
- Stigma: community can't manage the forest  
問題: 住民たちは森林を管理できない

## Forest & Community

森林と地域住民

- MoF Priority Program for community around forest area economic strengthening (2010-2014):  
**林業省による森林地域周辺の住民に対する経済強化のためのプログラム (2010-2014)**
  - HTI & HTR: 2,5 million hectar
  - HKM: 2 million hectar
  - Hutan Desa: 500,000 hectar
  - Kemitraan Hutan Rakyat: 250,000 hectar
  - Kemitraan HTI: 10 million hectar (10%)

## Forest & Community

森林と地域住民

- Government Scheme 政府の政策
  - Hutan Tanaman Rakyat (HTR) :Community Forest Plantation  
Permenhut P.23/Menhut-II/2007 jo P.05/Menhut-II/2008
  - Hutan Kemasyarakatan (HKM) :Community Forest  
Permenhut P.37/Menhut-II/2007 jo P.18/Menhut-II/2009
  - Hutan Desa (HD) :Village Forest  
Permenhut P.49/Menhut-II/2008 Jo P.14/Menhut - II/2010 Jo P.53/Menhut - II/2011
  - Kemitraan :Partnership

## Hutan Desa

村落林

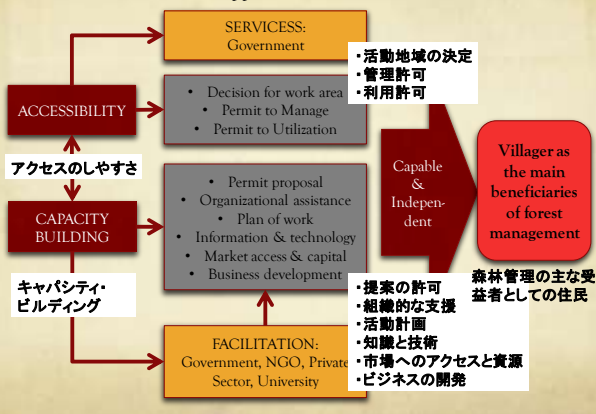
- Hutan Desa is state forest which managed by the village and used for the village welfare, with yet have a lincense  
**村落林は、住民によって管理され福利厚生のために利用されている国有林**
- Legal basis/Regulation: 規則:
  - UUD 1956 Pasal 33
  - UU No.41 Tahun 1999 Jo UU No.19 Tahun 2004 Tentang Kehutanan
  - PP No.6/2007 Jo PP.No.3/2008 Tentang Tata Hutan dan Penyusunan Rencana Pengelolaan Hutan Serta Pemanfaatan Hutan
  - Permenhut P.49/Menhut-II/2008 Jo P.14/Menhut - II/2010 Jo P.53/Menhut - II/2011 Tentang Hutan Desa
- There are 13 Hutan Desa (28,422 hectare) in 6 provinces - 7 districts  
**6の州と7の地域内に、計13の村落林(28,422ha)がある**

## Hutan Desa

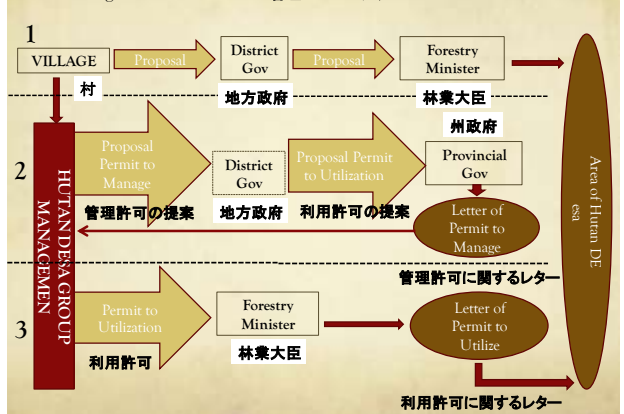
村落林

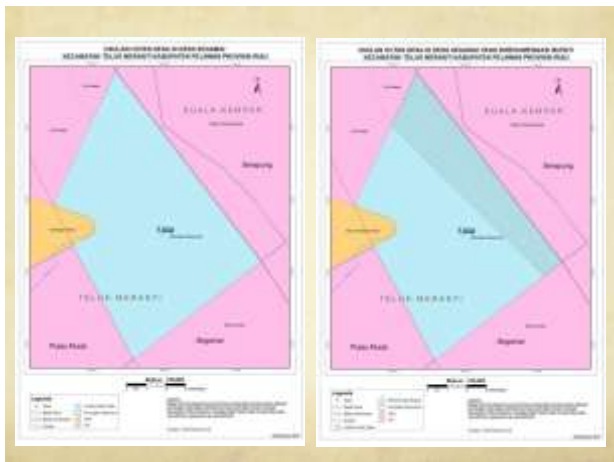
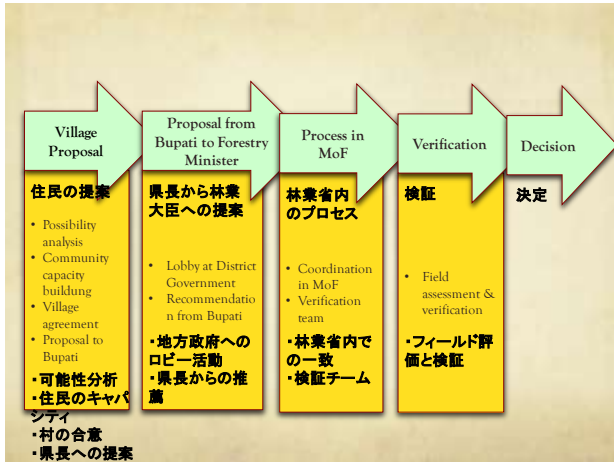
- Creating a Hutan Desa as an asset in the village for integrated rural development  
**村落林の設置は統合した地方開発のため、村にとっての利点となる**
- Hutan Desa coverage is wider than other scheme  
**村落林の対象は他のスキームよりも広い**
- The possibility of Hutan Desa in Kampar Peninsula is in natural forest area  
**カンパール半島における村落林の可能性は、天然林地域にある**

### Flowchart of Role & Support 役割と支援のフローチャート



### Management Flowchart 管理のフローチャート

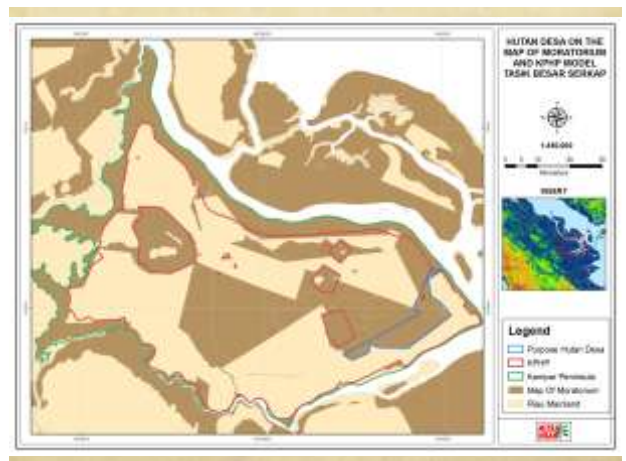




## Hutan Desa

Map of typology area 類型地域のマップ 村落林

- Area of study: N 0° 36' 30" s/d 0° 21' 40" dan E 102° 43' 3 0" s/d 103° 01' 30".
- Potential trees average 164 stems / ha, with a volume of 144.59 - 95.03 m<sup>3</sup>/ha
- Protected species of flora found around 11 species
- The number of non-timber forest products which found: 18 species, excluding fauna
- The percentage of canopy cover in plots sampled between 38% - 72%
- Peat surface temperature between 26.3 °C - 27.5 °C, humidity between 42.6% - 94.6% and a pH of peat between 4.6 to 5.0
- Carbon of surface 54,31 - 25,27 tons/ha, Under-surface is between 2,722.45 tons/ha up to 5,191.90 tons / ha





## Hutan Desa

村落林

Challenges: 課題

- Coordination: district - central government    コーディネーション: 地方-中央政府
- Government preferred to provide forest management to the company    政府は企業に森林管理権を与えたい
- There is 22,000 hectare possibility for Hutan Desa but still allocated 4,000 hectare, and the rest is directed to the company    22,000haの森林が村落林登録の可能性を持っているが、いまだに4,000haしか割り当てられていない。残りは企業へのもの
- REDD & Carbon trading    REDDと炭素取引

## Hutan Desa

村落林

Challenges: 課題

- License from Forestry Minister    林業大臣からの許可
- Hutan Desa management plan by community:
  - Plan of work    住民による村落林の管理計画:
    - 活動計画
    - 組織構造
    - 利益を生み出すためのシステム
  - Organizational structure
  - Benefit system

Thank You